



## HD Pro Headlocks

Durable and cow friendly with a functional and rugged design

GEA Farm Equipment | Norbco

engineering for a better world

GEA Farm Technologies

HD Pro Headlocks are the headlocks of choice to some of the largest dairies in the world. They have been built and installed for over 10 years. HD Pro Headlocks feature the latest design improvement to further increase the

efficiency of safely handling cattle, while creating less stress on the animals. They also improve the efficiency of day-to-day operations such as breeding, vaccination, and many other herd management tasks.



Swing arm support.

**One-piece swing arm.**

**Durable** — deep rib support to the end of the arm increases strength.

**Improved double bushing** — provides better arm movement.

**All hot-dipped galvanized construction.**



Positive locking system.

**“Lock up” position** — positively locks cows in place.

**Flapper guard** — new design for better performance.

**D-ring lifter** — allows safe and easy release of individual cows, while others are retained.

**Solid 5/8” steel control rod** — provides long life for the harshest environments.

**Latch mounted on the frame for long life.**



Cow friendly design.

**Cow friendly** — 17” wide opening allows for easy entrance.

**“Down and out” feature** — 17” wide bottom opening allows for easy cow removal.

**Rubber bumper** — reduces noise.

**Adjustable 1.66 pipe on medium-size headlock.**

## HD Pro Headlock Models

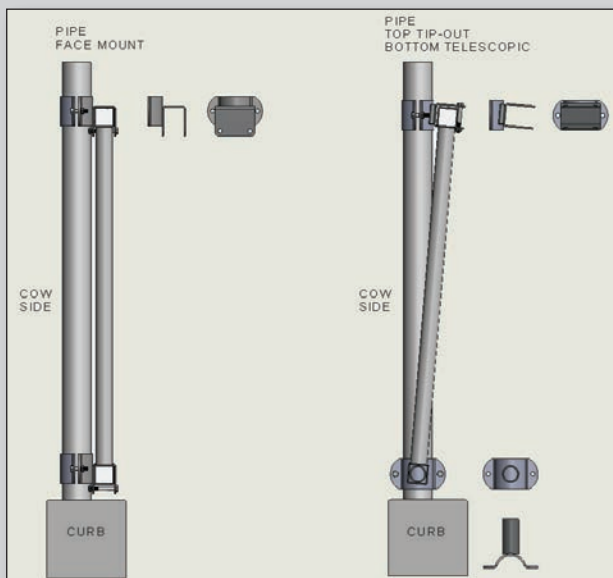
HD Pro Headlocks are offered in 11 models, with various lengths and number of locks to accomodate any animal size.

Model	Animal Size	Length	No. of Locks	Neck Size
L-8-4	Large (900 lbs. or over)	8 ft.	4	7 1/2”
L-10-4	Large (900 lbs. or over)	10 ft.	4	7 1/2”
L-10-5	Large (900 lbs. or over)	10 ft.	5	7 1/2”
L-12-6	Large (900 lbs. or over)	12 ft.	6	7 1/2”
M-8-5	Medium (400 to 900 lbs.)	8 ft.	5	6” or 7”
M-10-6	Medium (400 to 900 lbs.)	10 ft.	6	6” or 7”
M-12-7	Medium (400 to 900 lbs.)	12 ft.	7	6” or 7”
S-8-6	Small (Up to 500 lbs.)	8 ft.	6	5 1/2”
S-10-7	Small (Up to 500 lbs.)	10 ft.	7	5 1/2”
S-10-8	Small (Up to 250 lbs.)	10 ft.	8	5”
S-12-8	Small (Up to 500 lbs.)	12 ft.	8	5 1/2”

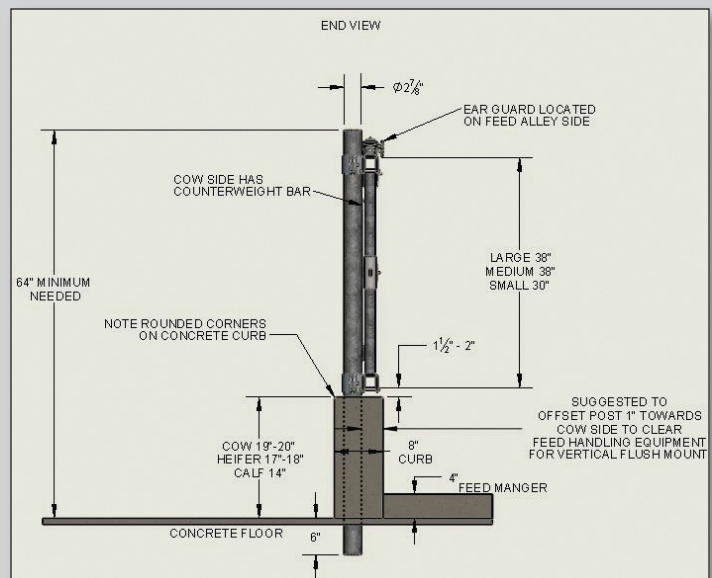


# HD Pro Headlocks

Suggested mounting dimensions



Mounting options shown on 2 7/8" O.D. schedule 40 pipe.



Suggested surface mounting options shown on 2 1/2" O.D. schedule 40 post.



## *We live our values.*

Excellence • Passion • Integrity • Responsibility • GEA-versity

GEA Group is a global engineering company with multi-billion euro sales and operations in more than 50 countries. Founded in 1881, the company is one of the largest providers of innovative equipment and process technology. GEA Group is listed in the STOXX® Europe 600 index.

### **GEA Farm Technologies**

#### **GEA Farm Technologies, Inc.**

4754 State Route 233, Westmoreland, NY 13490  
Tel: 315.853.3936

[www.gea.com](http://www.gea.com) | [www.gea-farmtechnologies.com/norbco/en](http://www.gea-farmtechnologies.com/norbco/en)

20903 W. Gale Avenue, Galesville, WI 54630

Tel: 608.582.3081

[www.gea.com](http://www.gea.com) | [www.gea-farmtechnologies.com/norbco/en](http://www.gea-farmtechnologies.com/norbco/en)

2500 E Tulare Avenue, Tulare, CA 93274

Tel: 559.686.7835

[www.gea.com](http://www.gea.com) | [www.gea-farmtechnologies.com/norbco/en](http://www.gea-farmtechnologies.com/norbco/en)