



Twist&Lock

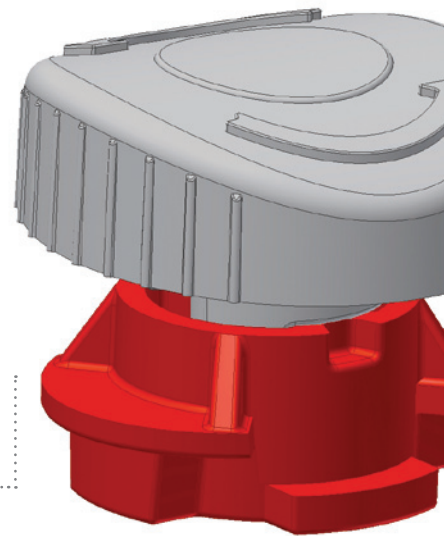
The animal-friendly and efficient
self-locking safety feed fence

GEA Farm Equipment | Royal De Boer

engineering for a better world

GEA Farm Technologies

The Twist&Lock self-locking safety feed fence has been developed using many years of experience in the Royal de Boer product line from GEA Farm Technologies. The uniqueness of Twist&Lock is that all of the individual functions, which were previously available in other models, have now been brought together for the first time in one product. Thanks to the integration of the mechanism within an enclosed U-profile and its simple operation, the new self-locking safety feed fence does not simply ensure optimal cow comfort but also provides a high level of flexibility and efficiency for the farmer. The cows can be individually held back or released as required simply by pressing a button or turning a knob: Twist and Lock.



Easy to use

More efficiency

The pendulum rods are locked in a central position (Lock) and then opened with the press of a button (Twist). This allows cows to be individually held back using a twistlock button. This saves time as you do not need to pull a lever, and also increases the efficiency of the work flows for the selection of cows during feeding. Thanks to the central locking system the feed fence can be controlled along a total length of up to 40 m from a single point.



Simple planning

For simple planning, the Twist&Lock safety feed fence is available in 21 standard lengths (134 to 480 cm). Each feed fence with less than 6 feeding places can be used as a gate component.

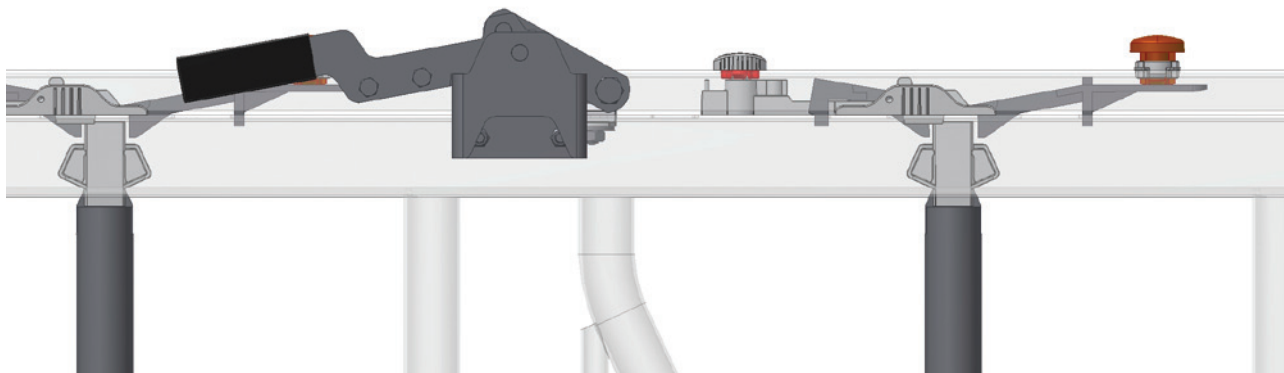
Fast assembly

Using the bracket kits the feed fence can be quickly fitted to various types of stall stanchions (rectangular or round, steel or wooden, double T-beam, vertical or sloped up to 12°). Connection of single fence elements has been simplified and significantly eases assembly.

Robust construction

All Twist&Lock elements have been optimised for longlasting use: the bronze bearing in the moveable hinged pole is particularly robust; the upper edge profile (60mm) and the lower tubing (60mm) are especially sturdy; all parts are galvanised and can withstand high levels of stress; the closing mechanism is protectively fitted into the upper frame.





Cow comfort

The safety feed fence is suitable for adult dairy cows and comprises a sturdy frame with moveable hinged poles.

Greater freedom of movement

The particularly large opening for the head (40cm) gives the cow easy access to the feeding table and more room to move around. As a result there is less stress in the herd and feeding is optimised.

Less noise nuisance

A pleasant atmosphere in the parlour increases the cow's well-being during feeding: High-quality plastic sliding blocks at both ends of the hinged pole ensure that its movements cause little noise. In addition, the safety system in Twist&Lock ensures that the cows that lie down or slip in the feed fence can be easily freed.

Special feature:

It is possible to fit the feed fence at an angle of up to 12° to ease the pressure on the cows' shoulders when feeding. The width of the feeding place, which can be varied from 60 to 78 cm, ensures a particularly good level of comfort.



High-quality plastic sliding blocks



Animal-friendly pivot



5 possible applications at a glance:

- Locking in entire groups of cows
- Releasing entire groups of cows
- Individual release at the press of a button
- Individual hold back using the Twist&Lock button
- Closing of all hinged poles via a central operating lever (optional)



We live our values.

Excellence • Passion • Integrity • Responsibility • GEA-versity

GEA Group is a global engineering company with multi-billion euro sales and operations in more than 50 countries. Founded in 1881, the company is one of the largest providers of innovative equipment and process technology. GEA Group is listed in the STOXX® Europe 600 index.

GEA Farm Technologies GmbH

Siemensstraße 25 - 27, D-59199 Bönen
Tel. +49 (0) 23 83 93 7-0, Fax +49 (0) 23 83 93 8-0
www.gea-farmtechnologies.com